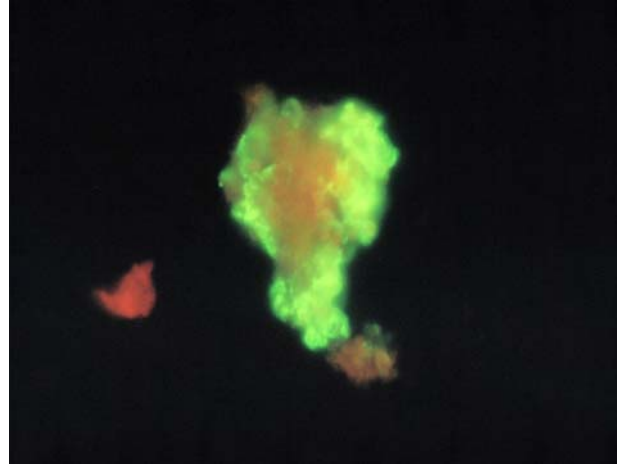
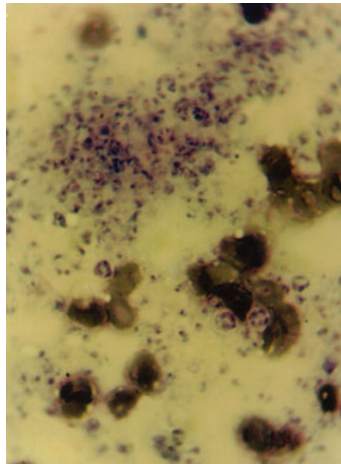




# Pneumo-Cel IFA (KP2)

The Cellabs Pneumo-Cel IFA (KP2) kit is an indirect immunofluorescence assay for the detection of *Pneumocystis carinii* organisms in human patient specimens (sputum or broncho-alveolar lavage).



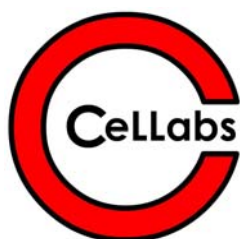
*P. carinii*: Giemsa stain (left) & Pneumo-Cel KP2 trophozoites stain (right)

## Superior clinical reliability

Monoclonal antibody detects both cysts and trophozoites  
Brilliantly stained trophozoites & halo stained cysts  
Specimen slides can be interpreted in less than 2 minutes

## Reliable and quick diagnosis

- No enzyme pre-treatment required
- Simple and rapid (30 + 30 minutes incubation)
- Same detection MAb as previous KP1 assay but better contrast than KP1 kit



### Cellabs Pty Ltd

P.O. Box 421 Brookvale  
NSW 2100 Australia  
Ph: + 61 2 9905 0133  
Fax: + 61 2 9905 6426  
Website: [www.cellabs.com.au](http://www.cellabs.com.au)  
Email: [sales@cellabs.com.au](mailto:sales@cellabs.com.au)